

**GOOD, BETTER, CLAIRE® NEO**  
New standards for safety,  
design and flexibility



Awards received for a  
design model of claire® pro



claire® neo, with all its components and properties,  
sets completely new standards for safety cabinets in  
terms of performance, function and design.

Our claire® neo offers endless possibilities  
unmatched by any other product on the market.  
The combination of a wide range of options  
and customised products stands for individual  
applications and maximum security.

## TECHNICAL INFORMATION claire® neo

### General data

Device	Laboratory device
Type of device	Cytostatic safety cabinet or microbiological safety cabinet
Type of construction	DIN 12980; DIN EN 12469; NSF 49
Marking	CE
Quality management system	DIN EN ISO 9001

### General technical data

Nominal illuminance	0–1.100 lux
Vibration (RMS) on worktops	≤ 5µm

### Material specific data

Material workspace	1,5 mm stainless steel „V2A“, material no.: 1.4301
Surface finish workspace	320 grit fine finish, mean roughness index Ra ≈ 1.6 µm
Material casing	Powder-coated 1.5 mm strong Zincor- steel sheet, material no.: 1.0330
Front-, side and back panel	Multi-layer safety glass with UV-light absorbing interlayer

### Electrical data

Rated voltage/ Rated frequency	230 V AC / 50/60 Hz
-----------------------------------	---------------------

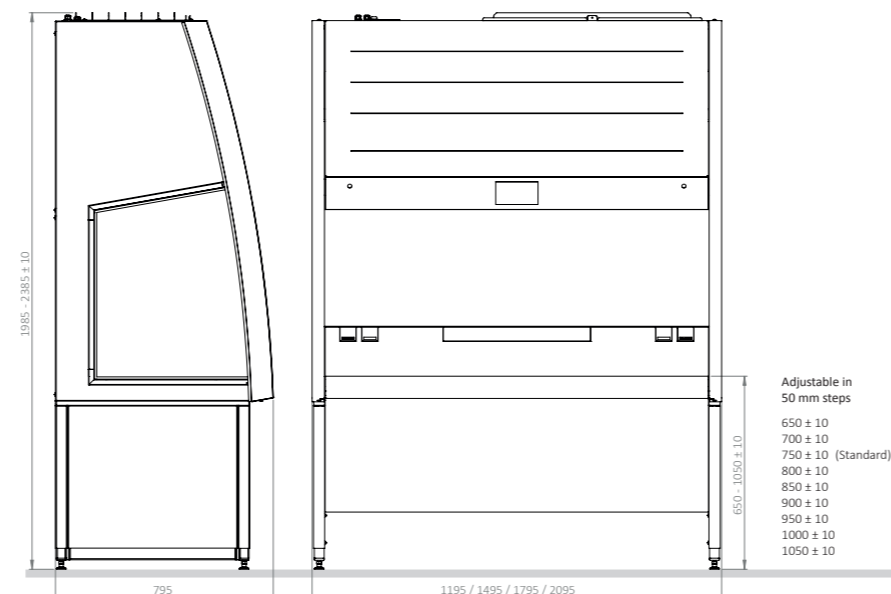
### Mechanical data

Width, outer	1195, 1495, 1795 and 2095 mm
Height	2008–2277 mm
Depth	795 mm
Worktop height	650–1050 mm

### Ventilation data

Filter classes (with main-, recirculation & exhaust filter)	Min. H 14 (Filtration rate: E ≥ 99,995%), in acc. DIN EN 1822-1 [1]
Cleanroom class in workspace	EC-GMP-Guidelines: A; DIN EN ISO 14644-1: ISO-class 5

[1] Integral degree of filtration as minimum filtration efficiency for max. penetration, with particles of the Most Penetrating Particle Size (MPPS).



Berner International GmbH  
Werner-von-Siemens-Str. 19  
25337 Elmshorn  
Germany

Tel +49 4121 4356 - 0  
Fax +49 4121 4356 - 20  
Email info@berner-safety.de

www.berner-safety.de



**CLAIRE® NEO – SAFETY CABINET**  
Experience the new flexibility

V1-22/06

**berner**

# claire<sup>®</sup> neo

## think forward



### NEW FLEXIBILITY

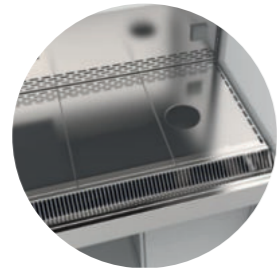
#### Manufacturing in grid dimensions

Exact dimensions in widths 1200 mm, 1500 mm, 1800 mm, 2100 mm and with a depth of 800 mm. Each model fits perfectly into the laboratory. Best planning and use of space for initial installations and laboratory redesign.



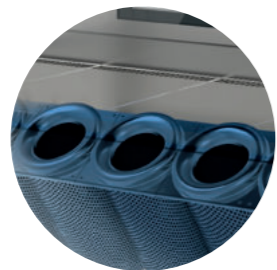
#### Optimal Functionality

The unique design of the worktops not only offers 12% more surface area — the segments can also be exchanged in various ways. The many functions represent great added value, e.g. flush-mounted heating plates, magnetic stirrer, LED backlighting, keyboard, waste disposal system, plug & play function for energy and data transfer, and much more.



#### Flexibility for the future

Construction design for the widest range of adaptation options for future requirements. Optional retrofitting with interfaces, a monitor or conversion between a 2- and 3-filter system is easily possible on site and reduces investment costs.



#### New sensors

A way of starting claire<sup>®</sup> neo touch-free. The front window can be opened and closed without contact — innovative sensor systems detect the approaching user.

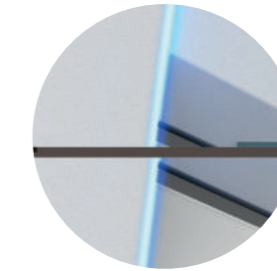


#### High-end-touch display

The newly developed user interface with dark mode offers exceptional user-friendliness and multifunctionality in addition to the usual intuitive operation. The new functions allow mode switching by swiping, simultaneous display of up to 15 function keys and logging in by code or RFID chip.

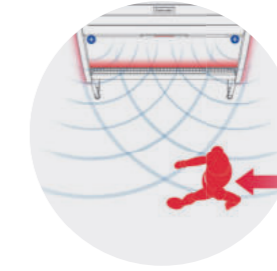


### PROVEN PREMIUM-QUALITY



#### Innovative LED light technology

In addition to the LED lighting of the workspace, lateral light bands and an illuminated side panels in the user's field of vision visualise the current operating status or alarms and guarantee maximum safety.



#### Movement-Measurement-System

Detection system of people's movements in front of the work opening generates clear warnings and leads to increased attention of laboratory personnel with regard to possible air flow disturbances.



#### Protection Shield

The multiple award-winning „Shield Design“ testifies to high design quality which combines innovation with form and function in an exemplary way.



#### Bespoke Manufacturing

Using our own research, development and construction, we can implement individual customer wishes.



#### GreenTec

Innovative technology and auto on-off function reduces operating costs by up to 84%.



#### Ergonomics

Extremely quiet, bright operating conditions, individually adjustable work surface height. Optimum legroom even with 3-filter systems due to the particularly compact design of the first main filter stage.

flexible

future-oriented